



**31<sup>st</sup> SWYC Charity Bay Race**  
**Benefiting ElderHelp**  
San Diego, California  
Sunday, June 17<sup>th</sup>, 2018

## SAILING INSTRUCTIONS

Regatta Chair

Kevin Murphy

(858) 344-9813

Principal Race Officer

Chris Brzezinski

rcchair@southwesternyc.org

Protest Chair

Summer Greene

protests@southwesternyc.org

### 1. RULES

- 1.1. The Racing Rules of Sailing (RRS) for 2017-2020, as modified by these Sailing Instructions, govern this regatta.
- 1.2. **NAVAL PROTECTION ZONE:** The Naval Protection Zone is a 500 yard regulated area of water surrounding all US Naval Vessels which are greater than 100 feet in length. All vessels within 500 yards of a US Naval Vessel greater than 100 feet in length shall operate at the minimum speed necessary to maintain safe course and speed and shall proceed as directed by any official patrol. **NO VESSEL IS ALLOWED WITHIN 100 YARDS OF A LARGE US NAVAL VESSEL.** These zones are permanently in effect. (33 C.F.R. 165.2030)
- 1.3. RRS 55 is changed by adding the following sentence to the rule: "However, discarding biodegradable bands when setting a sail is permitted." Racers remain responsible for compliance with all applicable state and federal laws.
- 1.4. Yachts racing in the San Diego Bay encountering non-racing vessels shall conform to the inland rules of the road. No vessel has the right of way over a large ship in the channel.

### 2. NOTICE TO COMPETITORS

- 2.1. Race Packets will be available at the SWYC front desk on Saturday, June 16<sup>th</sup>, 2018 between 1200 and 1700 hours, and at the buy up/buy down party on Friday, June 15<sup>th</sup>.
- 2.2. Notices to competitors will be posted on the RC Bulletin Board adjacent to the SWYC office and on the SWYC web page no later than 0900 hours on the day of the event.

### 3. CHANGES IN SAILING INSTRUCTIONS

- 3.1. Ashore: Any change in the Sailing Instructions will be posted on the above bulletin board and on the SWYC web page prior to 0900 hours on the day of the event.
- 3.2. Afloat: Any change in the Sailing Instructions made afloat will be communicated via VHF Channel 68 and/or loud hailer.
- 3.3. The Race Committee will monitor and communicate on VHF Channel 68 when on station.

### 4. RESERVED

### 5. SCHEDULE OF RACES

- 5.1. The race is scheduled for Sunday, June 17<sup>th</sup>, 2018. Time of the first warning will be 1155 hours.

### 6. CLASS FLAGS and CHECK-IN

- 6.1. Class pennants will be provided in the Race Packet and shall be displayed from the yacht's backstay. Yachts without a backstay shall display their pennants in a prominent manner near the stern.

<b>Open Class I</b>	<b>Blue Pennant</b>
<b>Open Class II</b>	<b>Yellow Pennant</b>
<b>SWRF</b>	<b>Green Pennant</b>

- 6.2. Each yacht shall check-in with the RC boat at least 10 minutes before its scheduled starting time. Yachts checking in shall pass the RC boat to starboard and hail with sail number and class. Check-in will be complete only when RC boat responds with that information. THERE WILL BE NO RADIO CHECK-IN.

7. RACING AREA

- 7.1. The racing area will be San Diego Bay. The starting area will be in the vicinity of the east end of Harbor Island.

8. THE COURSE

- 8.1. All classes will sail the following course.

**Start**

**Leave Green 19 to Port**

**Leave Red 24 to Port**

**Leave FM 19 to Port**

**Leave Red 20 to Port**

**Leave Green 21 to Port**

**Finish (between Green 17 and the RC boat)**

NOTE: Distance for handicap purposes is 10.1 nautical miles.

9. MARKS

- 9.1. See Attachment A for mark locations.

FM 19	Concrete fleet mooring buoy SSE of the east end of Harbor Island
Green 17	Navigation buoy for the San Diego Ship Channel
Green 19	Navigation buoy for the San Diego Ship Channel
Green 21	Navigation buoy for the San Diego Ship Channel
Red 20	Navigation buoy for the San Diego Ship Channel
Red 24	Navigation buoy for the San Diego Ship Channel

10. RESERVED

11. THE START

- 11.1. The race will use a pursuit starting system. This changes RRS 26. Class breaks and starting times will be available at 1600 hours, Saturday, June 16<sup>th</sup>, 2018.
- 11.2. The starting line will be between the course side of an inflatable yellow tetrahedron buoy and a staff displaying an orange flag on the RC boat at the starboard end of the line.
- 11.3. A distance buoy may be streamed aft of the RC boat and if present shall be considered part of the RC boat.
- 11.4. All yachts not starting shall keep clear of the line until four (4) minutes before their start time.
- 11.5. All motors must be off four (4) minutes before that yacht's start time.

- 11.6. After the first starting signal, individual warning, preparatory, and one-minute signals will not be given. A yacht's starting signal is considered to be at her assigned starting time, and her preparatory signal is considered to be 4 minutes prior to her starting signal. This changes RRS 26.
- 11.7. The RC will attempt to sound time checks at 15 minute intervals after the start until all yachts are started. If a time check is missed it is not grounds for redress.
12. RECALLS
  - 12.1. Individual recalls shall be signaled in accordance with RRS 29.1. The RC may attempt to notify premature starters either by loud hailer or **VHF Channel 68**. Failure of a yacht to hear a hail OR failure of the RC to hail shall not be grounds for redress. It is the responsibility of each yacht to start properly.
13. FINISH
  - 13.1. The finish will be between the course side of Buoy 17 and a staff displaying an orange flag on the RC boat on the starboard end of the line. A proper finish will leave the RC boat to starboard. A second boat may be located at the port end of the finish line to assist the RC boat.
14. PENALTY SYSTEM
  - 14.1. For all classes, Rule 44.1 is changed so that the "Two Turns Penalty" is replaced by a "One Turn Penalty" (one (1) tack and one (1) gybe in the same direction).
15. TIME LIMIT
  - 15.1. The time limit is 1630 hours. Any yacht not finished by 1630 hours will be scored DNF. This modifies RRS 35.
  - 15.2. A yacht that retires from the race must notify the RC before leaving the course. Failure to do this shall result in disqualification from this race and possible rejection of entry for subsequent races. This modifies 60.2, 63.1, A4 and A5.
16. PROTESTS
  - 16.1. Protests shall be initiated in compliance with RRS 61, except as amended by these Sailing Instructions.
  - 16.2. Protest flags shall be displayed from the backstay. On yachts that have no backstays, the protest flag will be displayed in a prominent position on the stern.
  - 16.3. Protesting yachts shall notify the RC boat, as soon as possible after finishing the race, of their intent to file a protest and **receive RC acknowledgment**.
  - 16.4. Protests must be in writing, photographed, and emailed to [protests@southwesternyc.org](mailto:protests@southwesternyc.org) not later than 60 minutes after the RC boat docks.
  - 16.5. Notice of protest and yachts involved including names of witnesses, if known, and the schedule of hearings will be posted on the RC Bulletin Board adjacent to the SWYC office within 30 minutes of the expiration of the protest time.
  - 16.6. Protests will be heard in the approximate order of receipt as soon as possible after the day's racing is complete, or at a later date, at the option of the Protest Committee.
  - 16.7. Arbitration will be available according to Appendix T for breaches of the rules of Part 2 where there is no damage or injury. Protests not resolved through arbitration or Request for Redress will be referred to the Protest Committee for a hearing.
17. SCORING

- 17.1. Classes will be assigned by the Organizing Authority, based on the number of entries. It will be the sole judgment of the Organizing Authority as to such assignments and handicaps.
- 17.2. Skippers may increase their yacht's rating, in three (3) second increments, by purchasing an adjustment as part of the registration process, or at the "buy-up/buy-down" party, as described in the NoR.
- 17.3. Skippers may decrease a competitor's rating, in three (3) second increments, by purchasing an adjustment as part of the registration process or at the "buy-up/buy-down" party, as described in the NoR.
- 17.4. Results will be announced at the awards ceremony.
18. SAFETY REGULATIONS
  - 18.1. The safety of a yacht and her crew is the sole and inescapable responsibility of the "person in charge," per RRS 46, who shall ensure that the yacht is seaworthy and sailed by an experienced crew with sufficient ability and experience to face bad weather. The person in charge shall be satisfied as to the soundness of hull, spars, rigging, sails, and all gear. The person in charge shall ensure that all safety equipment is at all times properly maintained and safely stowed and that the crew knows where it is kept and how it is used.
  - 18.2. The US Sailing's Safety at Sea Committee describes the gear requirements to be used on sailboats when racing. See **US Sailing Nearshore Safety Equipment Requirements** for required gear: [https://www.ussailing.org/wp-content/uploads/2018/03/US\\_SER\\_2018.0-1.xlsx](https://www.ussailing.org/wp-content/uploads/2018/03/US_SER_2018.0-1.xlsx)
19. POST-RACE ACTIVITIES
  - 19.1. SWYC invites all participants to enjoy the facilities and hospitality of the club at the Award Ceremony and BBQ following the racing.
20. PRIZES
  - 20.1. Awards for class winners and the Jerry Beeman Perpetual Trophy for overall winner will be presented at SWYC following the race.
  - 20.2. Awards for yachts involved in protests will be available for pickup on Monday, June 18<sup>th</sup>, 2018 and thereafter.
21. DISCLAIMER OF LIABILITY
  - 21.1. Sailing is an activity that has an inherent risk of damage and injury. Participants in this event take part entirely at their own risk. See RRS 4, Decision to Race. The organizing authority will not accept any liability for material damage to any yacht or other property or the injury to any participant, including death, sustained as a result of participation prior to, during or after the regatta.

# Attachment A

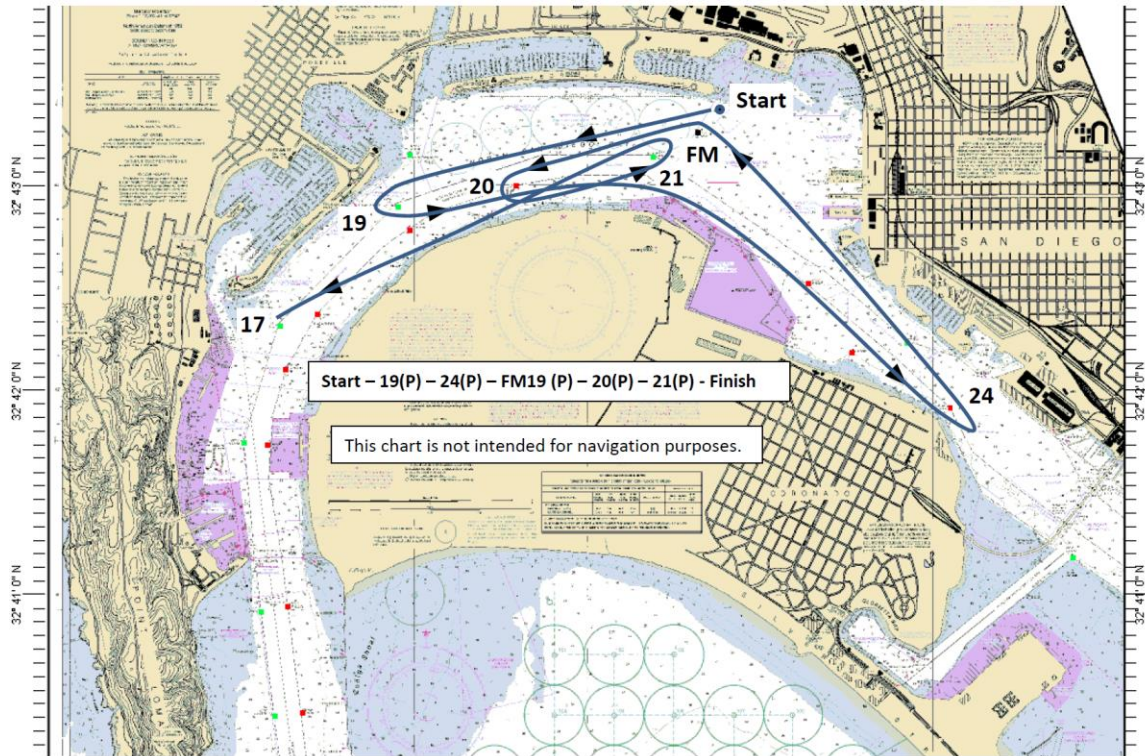


Chart Name: SAN DIEGO BAY  
Chart ID: 18773 1  
Top Left: 32° 43' 52" N 117° 15' 9" W  
Bottom Right: 32° 40' 12" N 117° 8' 53" W

© MAPTECH, INC.